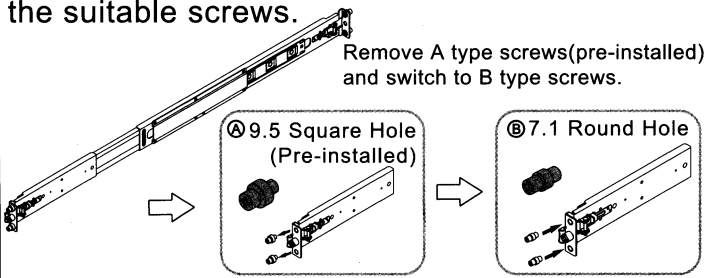
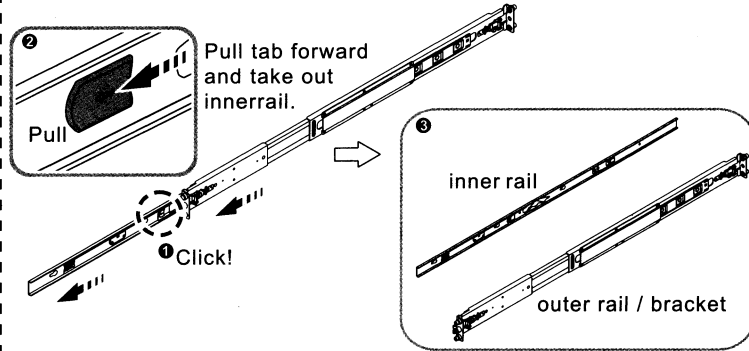


King Slide® — 3A02-600

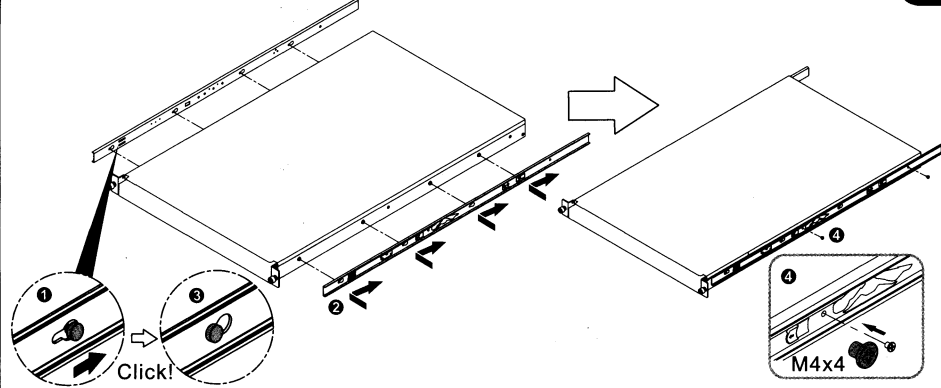
Note: Please check rack post type. The rail pre-installed type is for square hole post. If rack post is round hole post, please switch to the suitable screws.



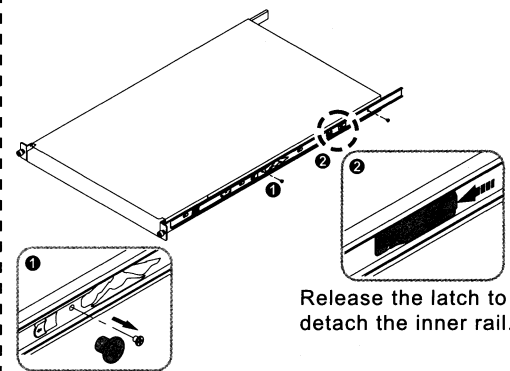
1) Remove the inner rail.



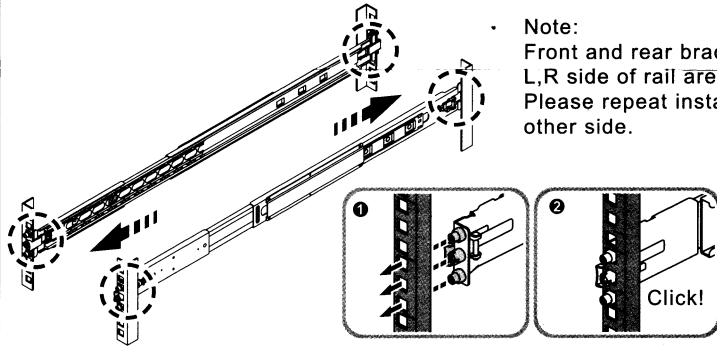
2) Install the inner rail onto chassis.



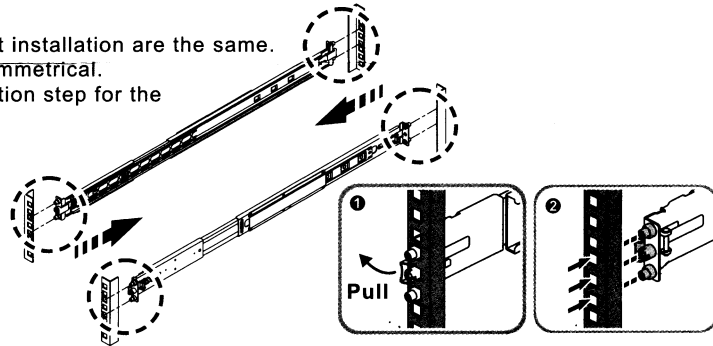
Detach Front Bracket from Rack Post



3) Fix the outer rail/bracket assembly to the frame.

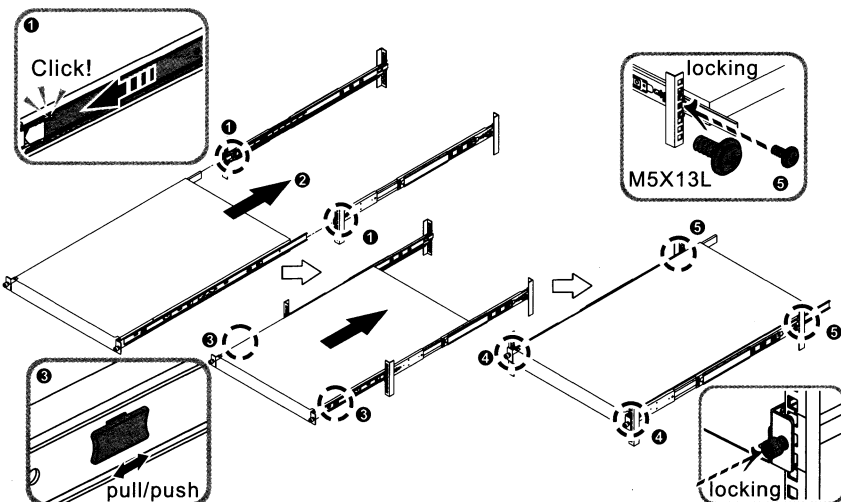


Detach Front Bracket from Rack Post



4) Insert chassis to complete the installation.

- Ensure ball bearing retainer is located at the front of the rail.
- Insert the chassis into outer rails.
- When hit a stop, please pull / push the release tab on the inner rails.
- Tighten chassis with shipping screws.



Detach Front Bracket from Rack Post

- Loosen shipping screw to pull out chassis.
- Press the disconnect tab forward to remove chassis.

